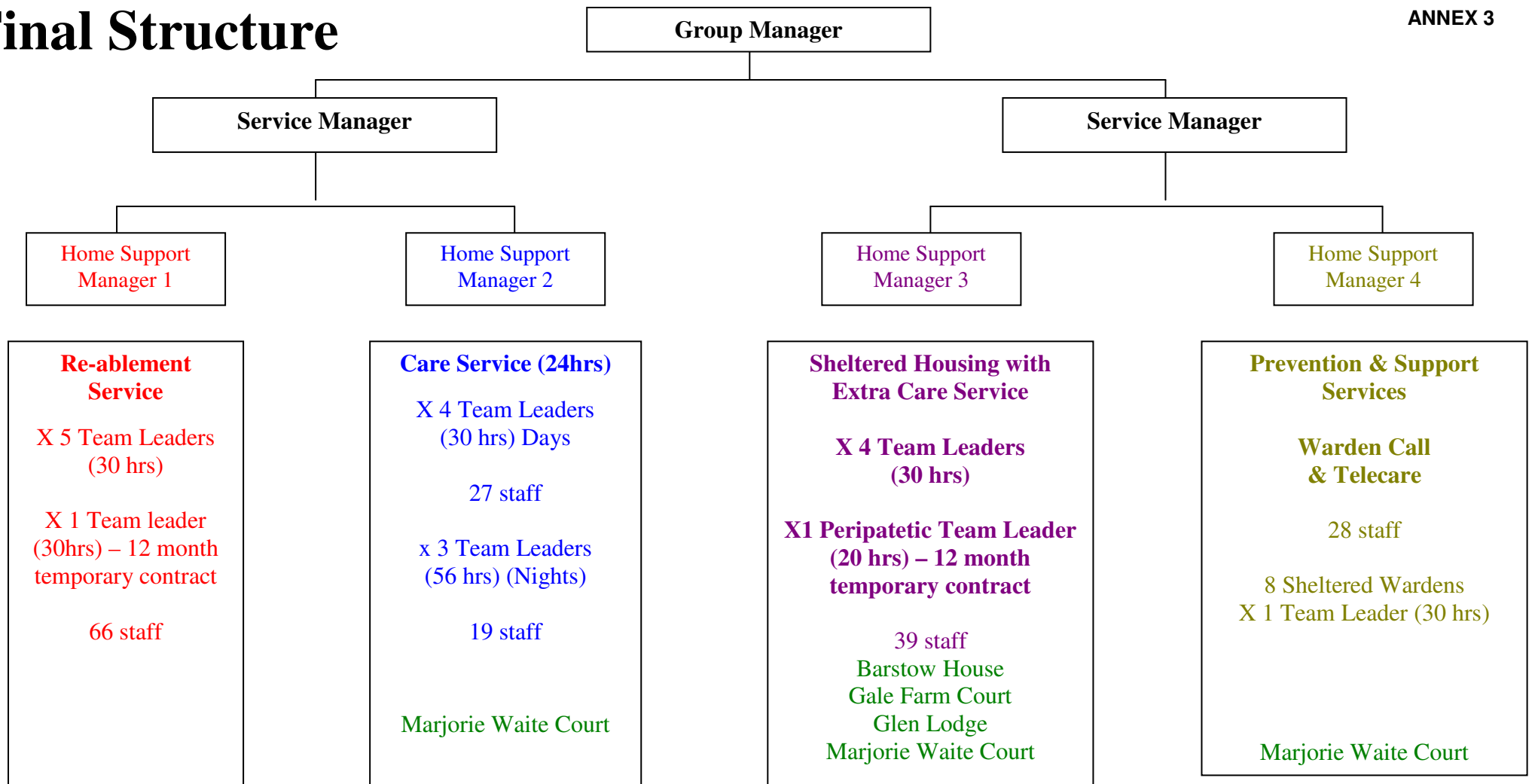


Final Structure



Summary

- Home Support managers reduced from 6 to 4
- Team Leader hours reduced from 590 hours to 500 hours enabling the introduction of new Team Leader hours in areas that previously had no support:
 - Night Service – 56 TL hours
 - Sheltered Wardens – 30 TL hours
- Admin staff – 8.5wte – 4 across Re-ablement, 2.5 wte at MWC and 2 wte at BH
- Number of hours in new service matches current hours of front-line staff

Home Support

X 2 Team Leaders (30 hrs)

19 staff

Barstow House